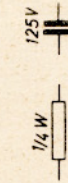
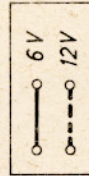
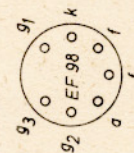


Strom- und Spannungswerte gemessen bei 25m mit Instrument Ri 50 000 Ω / V und ein Kondensator von 10T parallel zu R1 ($U_B=13V$).
Stated voltage and current values are checked on 25m with a volt-meter resistance of 50 000 Ohms per volt and a condenser of 10 000 MMF parallel-connected to R1 (Operation voltage 13 volts).



Taste / Push button	Bereich / Band
1	Umschalttaste / Change-over push button
2	49m Band
3	41m Band
4	31m Band
5	25m Band
6	19m Band
7	16m Band

Taste 2 gedrückt / Button 2 pushed



Zum Empfänger
Connection to receiver